

# BEST PACKAGING



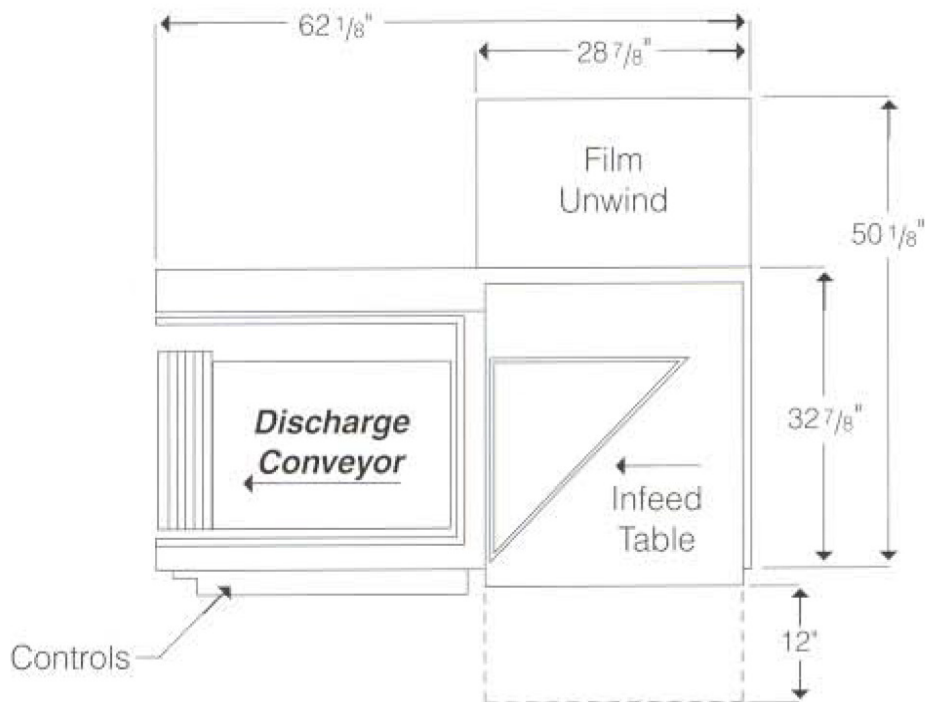
**Certified Refurbished Shanklin  
S-26 L-Bar Sealer**

**Best Packaging Inc  
(888) 930-BEST  
BestPackaging.com**

# Certified Refurbished Shanklin S-26 L-Bar Sealer

## Special Features

- "EZ Load" power film unwind
- Power film opener
- Pin perforator
- Adjustable inverting head with adjustable cut back
- Belt conveyor discharge
- Hot knife seal jaws
- Modern seal arm suspension accepts higher profile packages
- Automatic sealing cycle and package discharge



## S-26

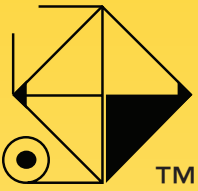
The Shanklin model S-26 L-bar sealer is compact, reliable, and easy to change over. The EZ Load Film Unwind permits film to be loaded onto support rollers without the need to insert a chuck into the core of the film. The film is drawn off the supply roll by a pair of powered drive rollers and then it flows on to the product loading area of the machine. The film then passes over and through a film inverting head, which redirects the film and produces an opening into which products are inserted. A loading tray in the inverting head makes it easy to insert the products and the film inverting head is easily adjustable for different heights and widths of product.

Seal jaws, which are pivoted at the discharge end of the machine, provide maximum opening height to enable higher profile products to be wrapped. Sealing is accomplished by means of hot knife seal jaws for improved seal jaw reliability. A conveyor in the product sealing area discharges product automatically.

# Certified Refurbished Shanklin S-26 L-Bar Sealer

Specifications			
	Length	Width	Height
Sealer Size (MAX)	24" (610 mm)	16" (406 mm)	8" (12.7 mm)
Overall Machine Dimensions	62" (1575 mm)	50" (1270 mm)	31"-43" (Adjustable) (787 - 1092 mm)
Speed	20-25 Packages/Minute		
Electrical Requirements	115 V, 15 Amps, 1 Phase (U.L. Listed control panel)		
Compressed Air	1.5 C.F.M at 60 P.S.I.		
Mechanical Adjustments	Discharge Conveyor Height Packaging Table Depth Inverting Head Height Film Roll Guides		
Electrical Controls	Dwell Timer Conveyor Run Time Anti-Tie Down Seal Buttons Unwind Reverse Switch Hot Knife Temperature Controllers		
Pneumatic Controls	Air Filter Air Regulator Gauge Flow Control Valves on Sealing Arm		
Safety Features	Jaw Safety Switches on Seal Arm Jaw Shield		
Accessories	Teflon Coated Inverting Head Film Centerfolder Casters Hole Punch		

The detail of the product(s), descriptions or specifications (for example weight, color, size, etc.) are only approximate values based upon a "standard model" of the representative product(s)/feature(s). There may be slight variations in the actual product design, dimensions, and functionality as compared to the information shown on our website and/or any supplementary product documentation, including but not limited to product brochures and spec sheets.



# BEST PACKAGING®

## WHY WE'RE THE BEST

Since 1997, we have been consulting, designing and implementing packaging solutions to offer the best for your operations. We represent a variety of equipment manufacturers, so as to ensure we're matching the right solution for your packaging needs. We only align ourselves with quality brands to make sure we are delivering the best value. It is our goal to provide the highest quality service to make your job easier and more productive.

Over 150 years of industrial experience, collectively.

We represent multiple brands and our analysis is unbiased. We can match the best systems with your needs based on the versatility of the job.

With preventative maintenance, operator training, and 24/7 support, we're with you every step of the way!

Steve Kudia, Owner of Best Packaging, serves on the ASTM committee. As part of a prestigious worldwide network of technical experts, he aims to make sure processes stay efficient by monitoring trends and educating customers on how they can improve their performance.

Equipment We Sell & Service

Stretch Wrappers

Shrink Wrappers

Tray and Case Loaders

Tray & Case Erectors

Corrugated Case Formers

Conveyors

Palletizers

Robotics

Strappers & Banders

Much, much more!



@BestPackagingInc



@Best\_Packaging



/Best-Packaging-Inc