

BEST PACKAGING

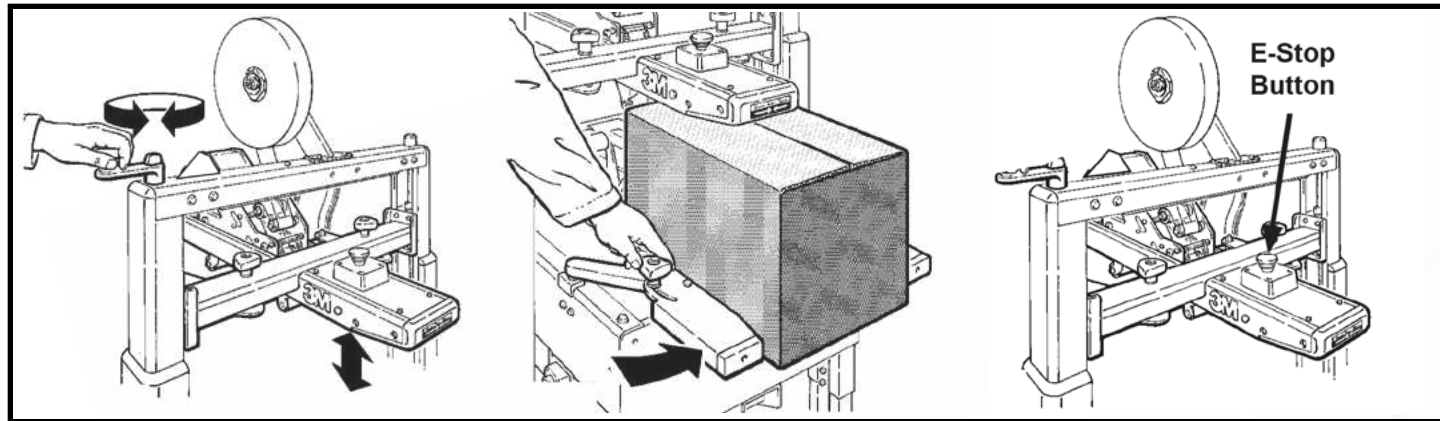


**Certified Refurbished 3M®
200a Case Taper**

**Best Packaging Inc
(888) 930-BEST
BestPackaging.com**

Certified Refurbished 3M® 200a Case Taper

The 200a is an adjustable case sealer manufactured by 3M for pressure tape application on top and bottom of RSC cases of a uniform size. This product is suitable for many applications, including food & beverage, medical, print and general industrial. This durable steel case taper applies 2" wide tape strips at a rate of 40 cases per minute. Using a heavy duty gear motor, the bottom belt drive system is capable of advancing packages up to 85 lbs. The upper tape head rests on dual telescopic masts that are adjusted by hand crank. Case width is set using knobs on either side of the adjustable side guides. It features a proprietary Accuglide tape head that applies tape in a "C" clip formation to the top and bottom center seam.



Certified Refurbished 3M® 200a Case Taper

Specifications			
	Length	Width	Height
Minimum Package Dimensions	6" (150 mm)	6½" (165 mm)	4 ½" (101 mm)
Maximum Package Dimensions*	∞	21 ½" (546 mm)	24 ½" (622 mm)
Maximum Package Weight	85 lbs. (38.6 kg)		
Case Type	Uniform Size Regular Slotted Containers (RSC)		
Tape Heads	Top & Bottom AccuGlide™ 'C' Clip		
Tape	1 ½" - 2" (36 - 50 mm) wide, up to 16" (406 mm) maximum diameter on 3" (76.2 mm) core		
Overall Machine Dimensions	948" (24079 mm)		53" - 86" (1350 - 2185 mm)
Machine Shipping Weight	346 lbs (157.6 kg) uncrated		
Electrical Requirements	115 V, 60Hz, 3.8A, 440 watts		

*The 200a can accommodate most boxes within the size range listed above, however if....

Box Length in Direction of Seal

Box Height

is less than .5

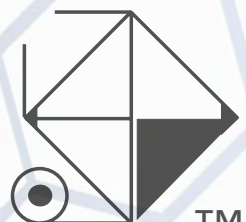
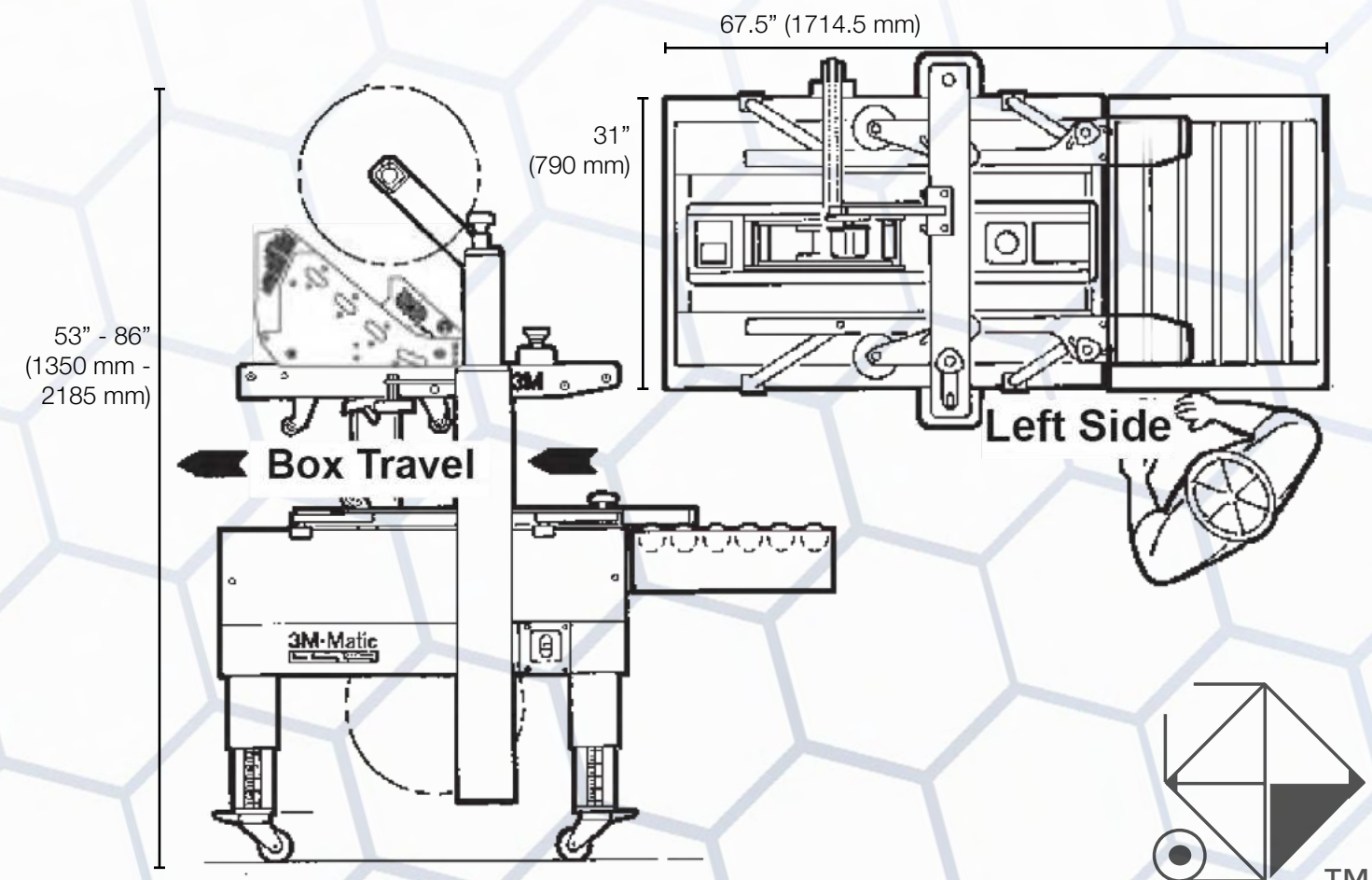
Boxes should be test run to ensure proper machine performance

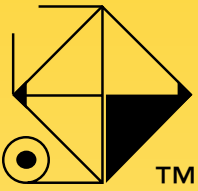


Standard Features:

- Seals up to 40 PPM
- Compression rollers squeeze flaps together to create a tight seam
- Bottom belt drive conveys cases up to 85 lbs
- 16-gauge welded steel frame with epoxy paint finish
- Dual masts include twin lead screws for stop relocation and stronger taping head stability

The detail of the product(s), descriptions or specifications (for example weight, color, size, etc.) are only approximate values based upon a "standard model" of the representative product(s)/feature(s). There may be slight variations in the actual product design, dimensions, and functionality as compared to the information shown on our website and/or any supplementary product documentation, including but not limited to product brochures and spec sheets.





BEST PACKAGING®

WHY WE'RE THE BEST

Since 1997, we have been consulting, designing and implementing packaging solutions to offer the best for your operations. We represent a variety of equipment manufacturers, so as to ensure we're matching the right solution for your packaging needs. We only align ourselves with quality brands to make sure we are delivering the best value. It is our goal to provide the highest quality service to make your job easier and more productive.

Over 150 years of industrial experience, collectively.

We represent multiple brands and our analysis is unbiased. We can match the best systems with your needs based on the versatility of the job.

With preventative maintenance, operator training, and 24/7 support, we're with you every step of the way!

Steve Kudia, Owner of Best Packaging, serves on the ASTM committee. As part of a prestigious worldwide network of technical experts, he aims to make sure processes stay efficient by monitoring trends and educating customers on how they can improve their performance.

Equipment We Sell & Service

Stretch Wrappers

Shrink Wrappers

Tray and Case Loaders

Tray & Case Erectors

Corrugated Case Formers

Conveyors

Palletizers

Robotics

Strappers & Banders

Much, much more!



@BestPackagingInc



@Best_Packaging



/Best-Packaging-Inc